



***Assembly manual***

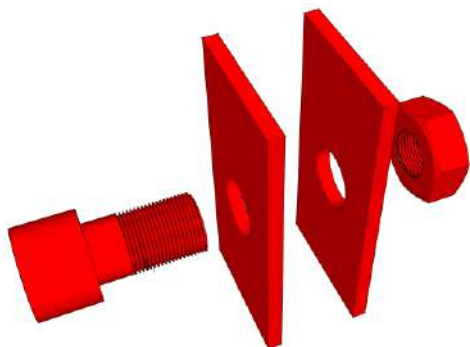
**for joined/ connected units**

**Connection on *2 levels***

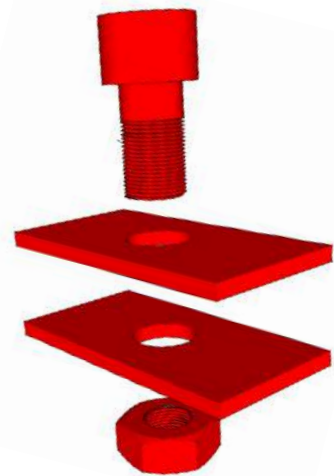


**External** **Connection kit set**

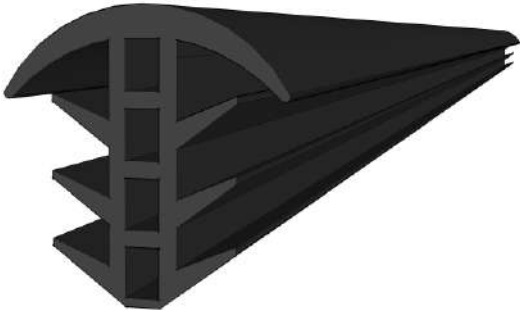
**Option 1**



**Horizontal  
Connection plate**



**Vertical  
Connection plate**



**Gasket/ sealing rubber**



# **External** *Connection kit set*

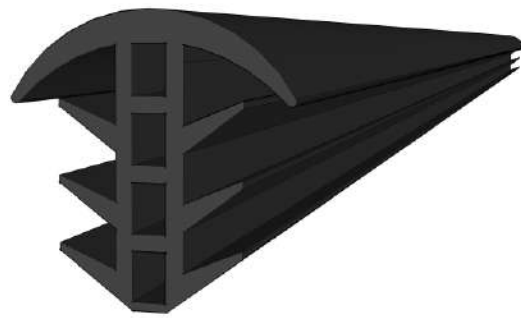
**Option 2**



**Twist lock**  
(for vertical connection)



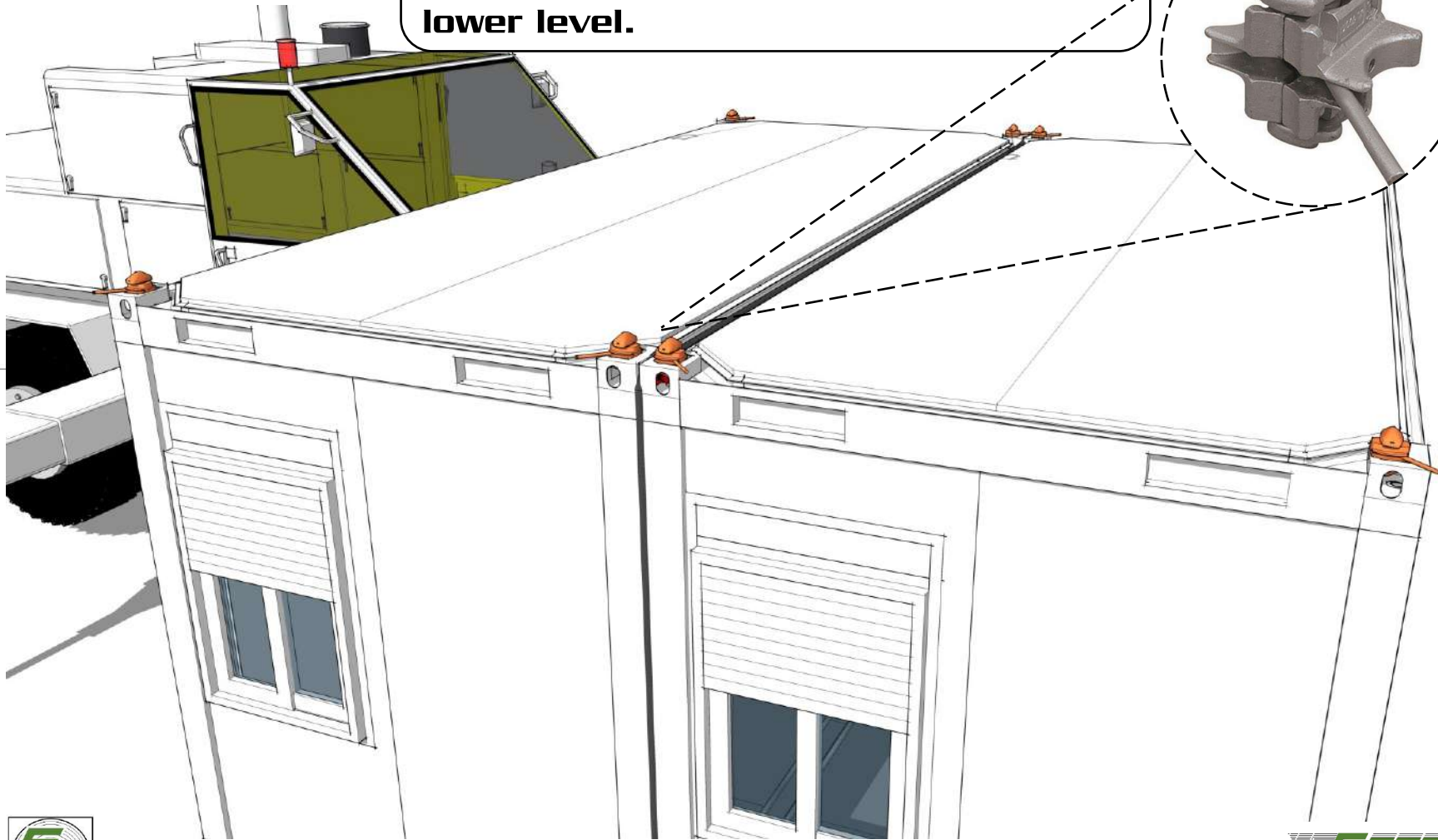
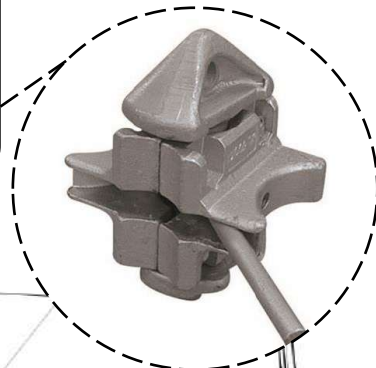
**Container bridge connector**  
(for horizontal connection)



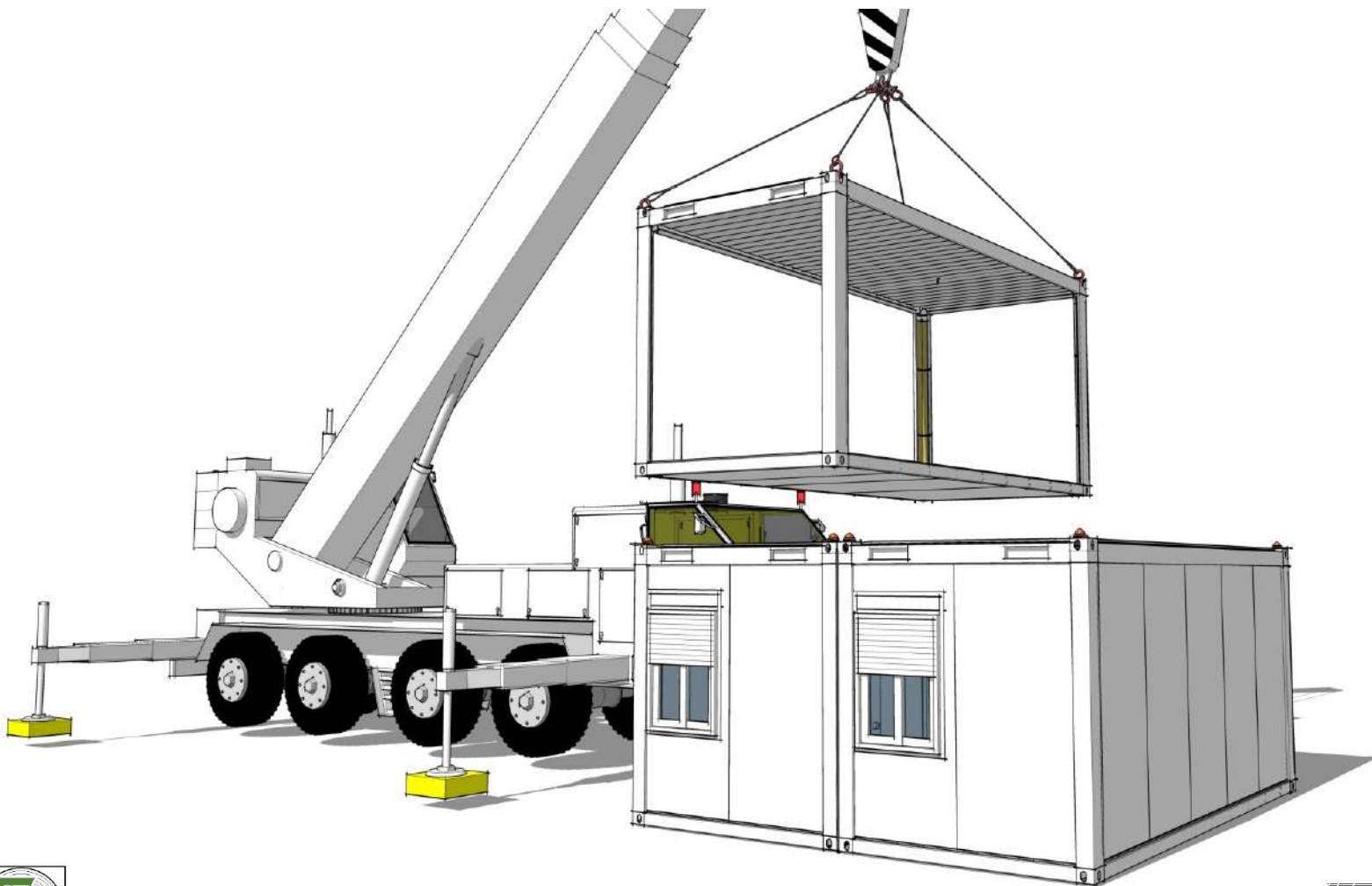
**Gasket/ sealing rubber**



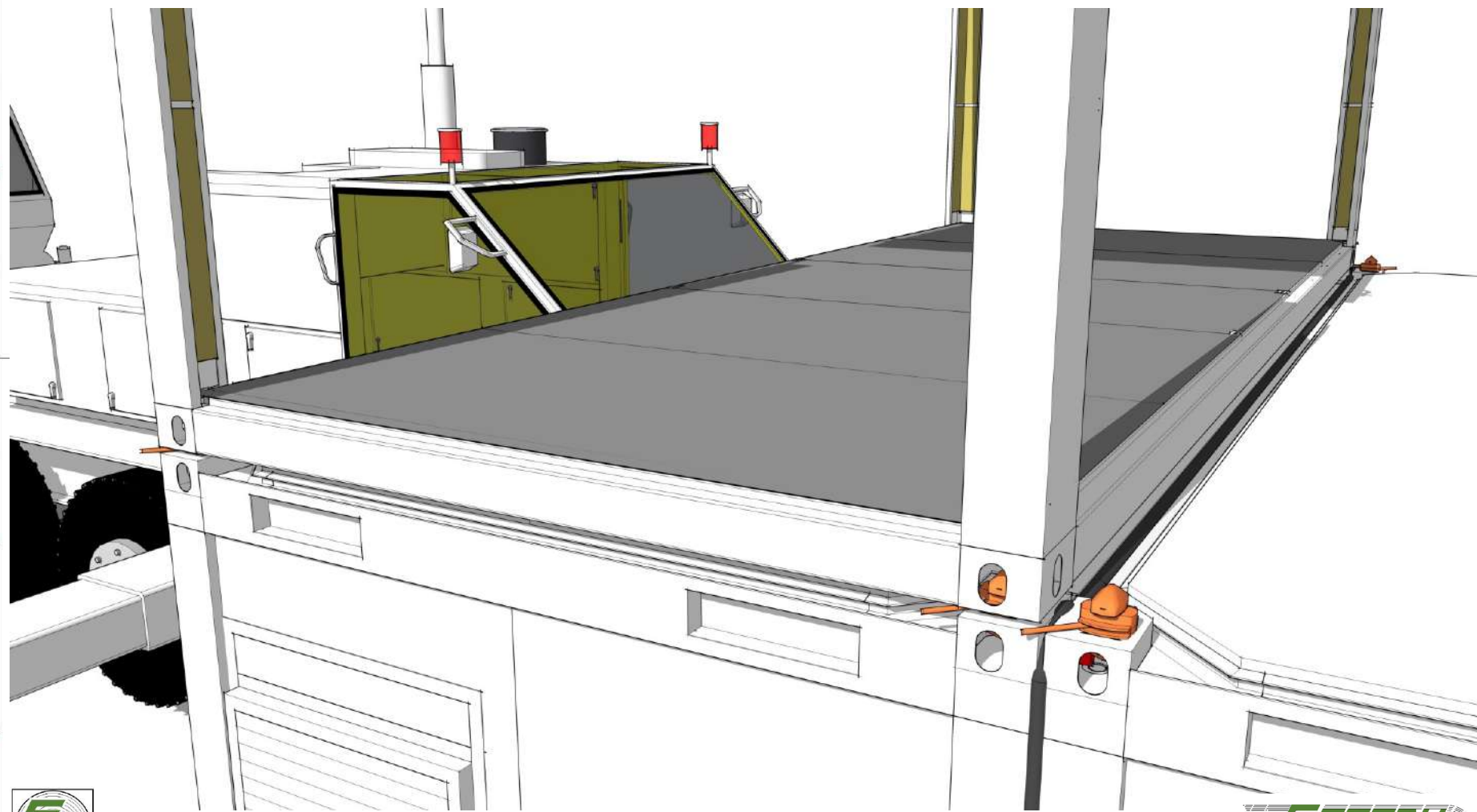
**For Vertical connection:  
Fix the Twist locks on all top corners  
of the flatpack containers in the  
lower level.**



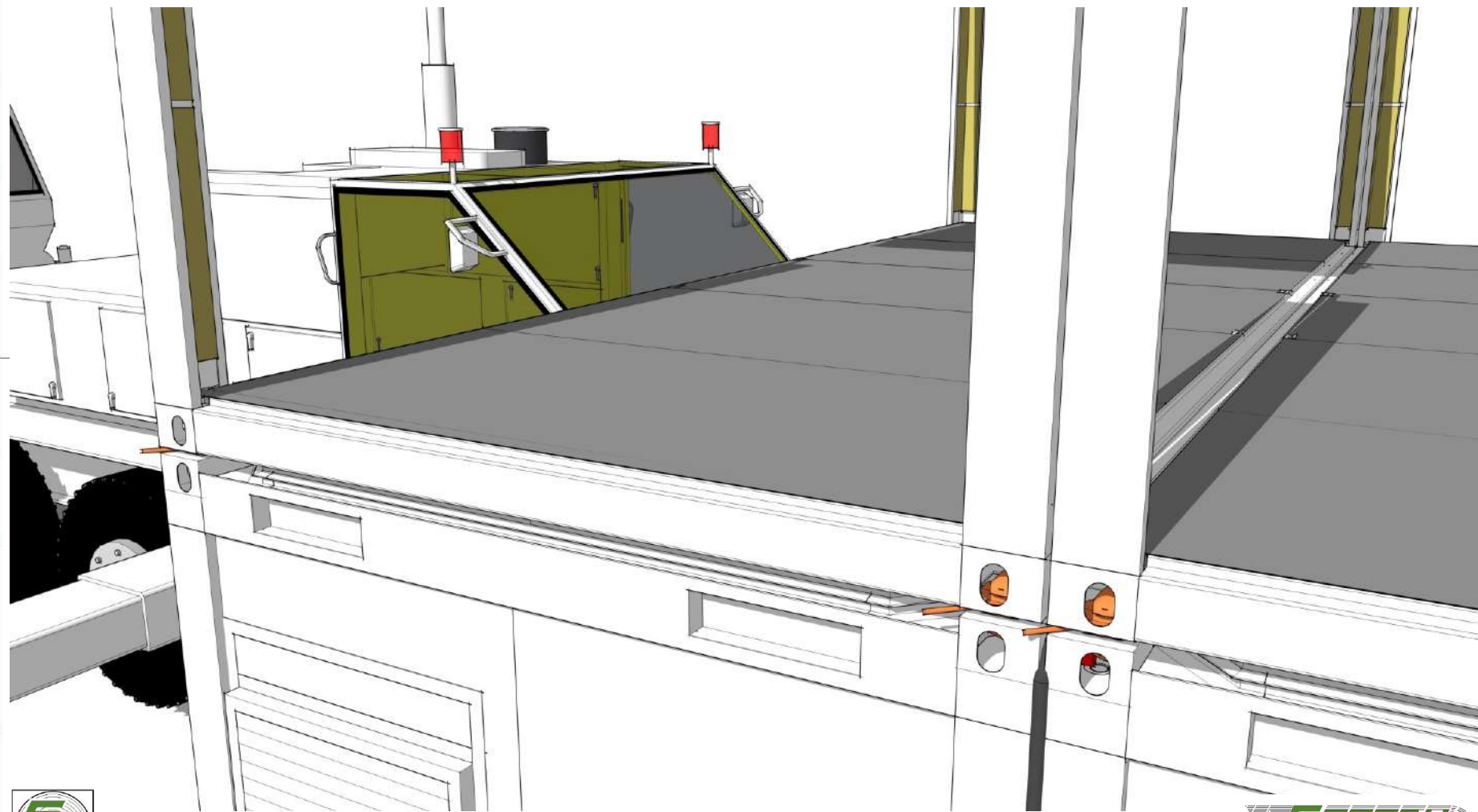
**Prepare the flatpack containers to be installed in upper level.**



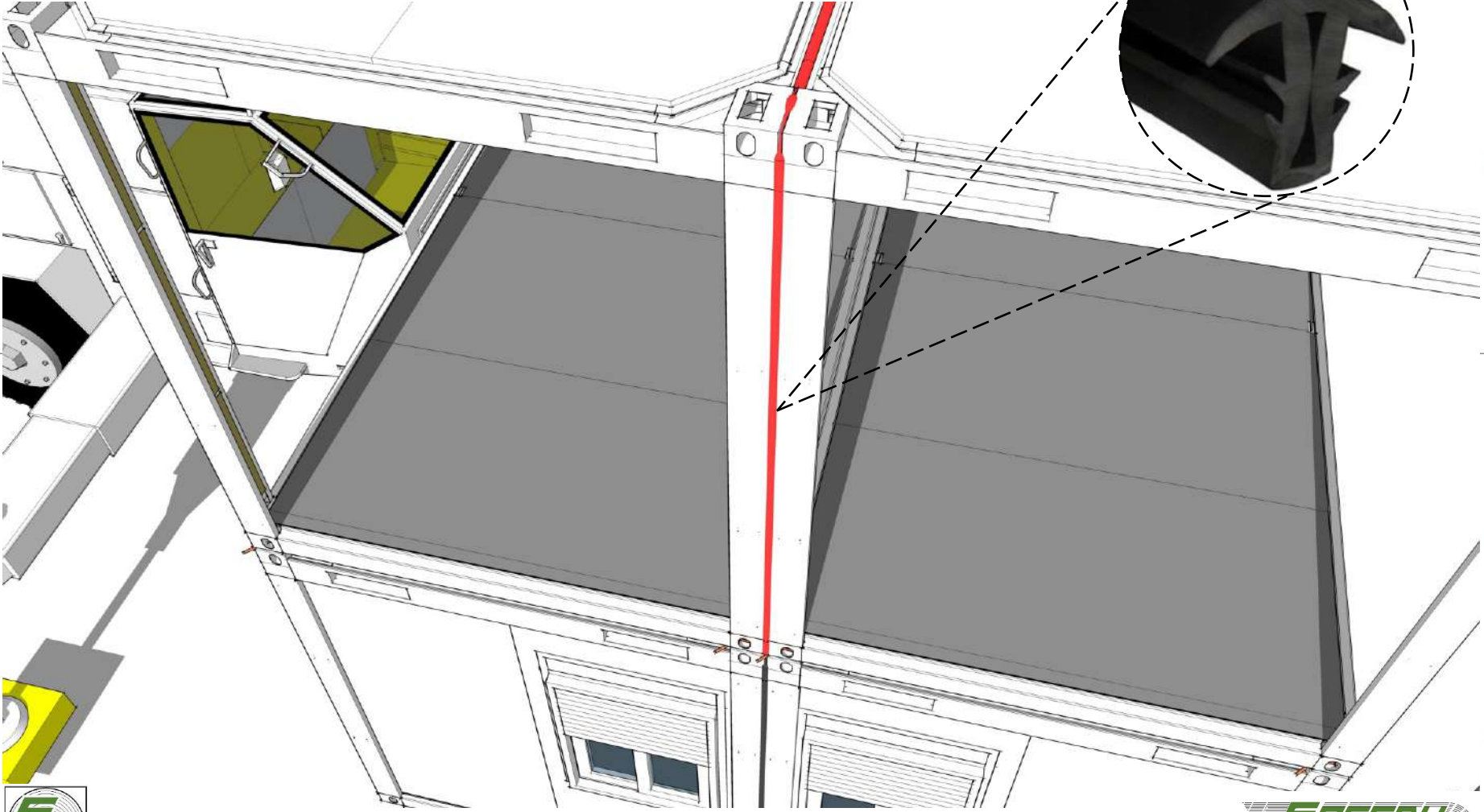
**Position the flatpack containers and check alignment. Lock it in place.**



**Position the next flatpack containers and repeat the same step.**

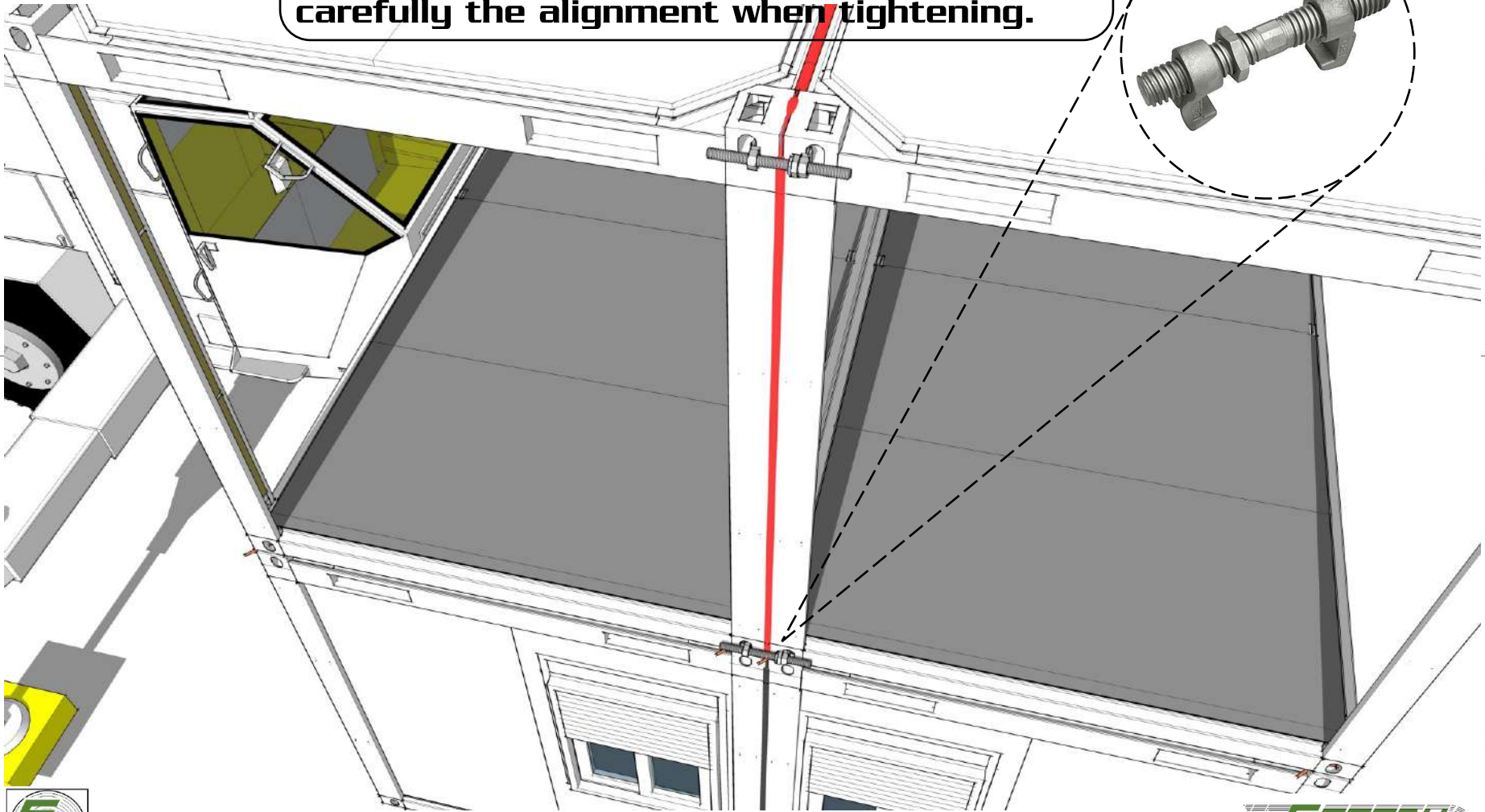
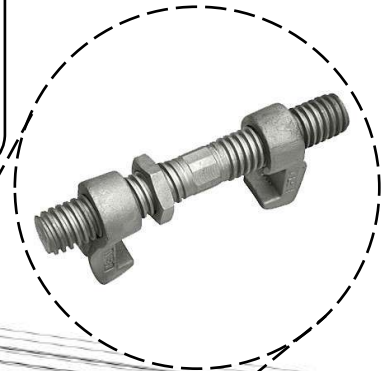


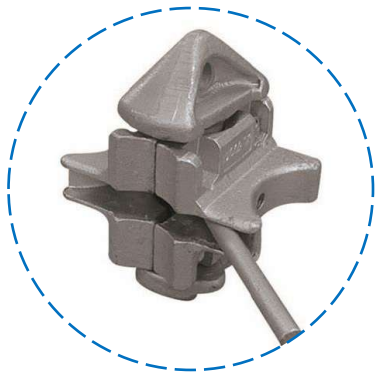
**Install the rubber seal/gasket as mentioned in the previous steps.**



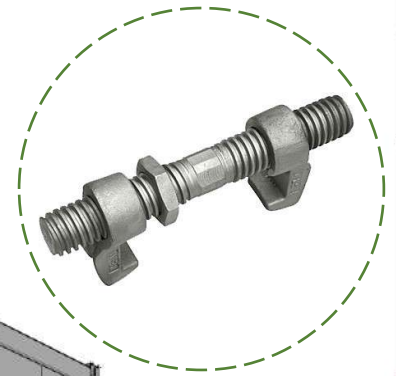


**For Horizontal connection:  
Install the container bridge connectors on  
top and bottom corners as shown. Observe  
carefully the alignment when tightening.**





**Twist lock**



**Container bridge**

